



Evaluating Herbicides Bio-efficacy on Yield, Quality Parameters of Sweet Sorghum and Their Residual Effects on Soil Microbial Diversity

P. Sravani ^{a++*}, P. K. Chovatia ^{b#}, R. M. Muchhadiya ^{b#},
H. L. Sakarvadia ^{b#}, S. P. Kachhadiya ^{b#}, R. M. Solanki ^{b#}
and N. J. Rankja ^{b#}

^a Department of Agronomy, Junagadh Agricultural University, Junagadh-362001, Gujarat, India.

^b Department of Agronomy, College of Agriculture, JAU, Junagadh, India.

Authors' contributions

This work was carried out in collaboration among all authors. All authors read and approved the final manuscript.

Article Information

DOI: <https://doi.org/10.9734/jeai/2024/v46i102920>

Open Peer Review History:

This journal follows the Advanced Open Peer Review policy. Identity of the Reviewers, Editor(s) and additional Reviewers, peer review comments, different versions of the manuscript, comments of the editors, etc are available here:

<https://www.sdiarticle5.com/review-history/123840>

Original Research Article

Received: 22/07/2024

Accepted: 24/09/2024

Published: 27/09/2024

ABSTRACT

An experiment was carried out at Instructional Farm, Department of Agronomy, College of Agriculture, Junagadh Agricultural University, Junagadh (Gujarat). The aim of the research is to evaluate herbicides bio-efficacy on yield, quality parameters of sweet sorghum and their residual effects on soil microbial diversity. The higher grain yield and fodder yield (kg ha⁻¹), reducing, non-

⁺⁺ Ph.D. Scholar;

[#] Professor & Head;

^{*}Corresponding author: E-mail: pokalaroyal.84@gmail.com;

Cite as: Sravani, P., P. K. Chovatia, R. M. Muchhadiya, H. L. Sakarvadia, S. P. Kachhadiya, R. M. Solanki, and N. J. Rankja. 2024. "Evaluating Herbicides Bio-Efficacy on Yield, Quality Parameters of Sweet Sorghum and Their Residual Effects on Soil Microbial Diversity". *Journal of Experimental Agriculture International* 46 (10):9-24. <https://doi.org/10.9734/jeai/2024/v46i102920>.

reducing sugars and total sugar in juice were recorded under weed-free plot (T₉), which was statistically at par with the treatments IC & HW at 15 and 30 das (T₈), PE application of atrazine 50 WP 500 g/ha fb mesotrione + atrazine 44.97 SC (premix) 875 g/ha at 30 DAS, (T₇) and PE application of atrazine 50 WP 500 g/ha + IC & HW (T₁). Before sowing, no significant differences in microbial population were observed. At 20 days after herbicide application, the weedy check plot (T₁₀) had the highest microbial population, similar to weed-free and manual weeding treatments. Herbicide-treated plots had lower microbial populations. At harvest, the highest microbial population was found in atrazine 50 WP 500 g/ha (PE) followed by tembotrione 42 SC 100 g/ha (PoE) which remained statistically at par with the rest of herbicidal treatments.

Keywords: Sweet sorghum; herbicide; weed management; microbial population; bioassay; herbicide residue.

1. INTRODUCTION

In India, sweet sorghum shares about 0.002 per cent area out of total sorghum area. Its ratooning ability enables multiple harvests per season, a feature that could expand the geographical range of sorghum cultivation. The grain, stalk juice and bagasse can be used to produce food, fodder, ethanol and power. Owing to these favorable attributes, Dar [1] refers to it as a SMART crop. It is known as the sugarcane of the desert and also “the camel among crops” for its drought hardy characteristics (Sanderson *et al.*, 1992). These important characteristics, along with its suitability for seed propagation, mechanized crop production and comparable ethanol production capacity vis-a-vis sugarcane and sugar beet makes sweet sorghum a viable alternative source for ethanol production.

Among the various biotic factors limiting sweet sorghum production and productivity, weeds are of prime importance. Bitzer [2] reported that plant density and weed management are among the main factors affecting growth, sugar and forage yields of sweet sorghum. In India, presence of weeds in general reduces crop yields by 37 - 45% and in some cases can cause complete crop failure, when compared to 25% due to diseases, 20% due to insects, 15% due to storage and miscellaneous pests (Bahadur *et al.*, 2015). To prevent yield losses, weeds have to be controlled at critical periods during the crop growth cycle [3]. Silva *et al.* [4] reported that on an average, weed can reduce the yield by 50% in sweet sorghum. Chemical weed control is a better supplement to conventional method and forms an integral part of the modern crop production. It is quick, more effective, time and labour saving method than others [5]. Among various sorghum yield limiting factors, weed infestation remains a big challenge [6]. Hence, the present study was undertaken to

evaluate herbicide bio-efficacy on sweet sorghum yield, quality parameters and their residual effects on soil microbial diversity. Certain rotational crops are extremely sensitive to herbicide carry over, particularly the residues of persistent herbicides. Accurate quantification of herbicide residues is essential as it may also do harm to humans and animals through both water and food. Hence, studies on the residual effects of herbicide on the succeeding crops are important, before it is finally recommended for field applications to the farmers. Chemical methods and field bioassays are most frequently used for the assessment of herbicides residues in soil.

2. MATERIALS AND METHODS

A field experiment was conducted during *rabi* and summer seasons of 2022-23 and 2023-24 at Instructional Farm, Department of Agronomy, College of Agriculture, Junagadh Agricultural University, Junagadh. The dominant soil type of the area is clayey in texture.

The experiment was laid out in a randomized block design with ten treatments and replicated thrice. Sweet sorghum (SSV 84) was sown at a spacing of 60 x 10 cm. The weed management treatments consisted of pre-emergence application (PE) of atrazine 50 WP @ 500 g/ha. The pre-emergence herbicide was supplemented with inter-cultivation (T₁) or post-emergence application (PoE) of 2,4-D (SS) @ 95 SP (T₂), halosulfuron- methyl 75 WG @ 60 g/ha (T₃), topramezone 33.6 SC @ 25 g/ha (T₄), clodinafop-propargyl 15 WP @ 60 g/ha (T₅), tembotrione 42 SC @ 100 g/ha (T₆), mesotrione + atrazine 44.97 SC (Premix) @ 875 g/ha (T₇), at 30 days after seeding (DAS), IC & HW at 15 and 30 DAS (T₈), weed free plot (T₉) and weedy check plot (T₁₀).

Pre-emergence herbicides were applied at 1 DAS and inter-cultivation/post-emergence herbicide, was applied at 30 DAS. All the pre-and post-emergence herbicides were applied with the help of knapsack sprayer fitted with flat fan nozzle and spray volume of 500 L/ha. The sweet sorghum was fertilized with 90-40-40 N-P₂O₅-K₂O kg ha⁻¹. The weed biomass and density were recorded randomly with the help of 0.25 m² quadrat. The estimation of reducing sugar in sweet sorghum juice and grain was carried by 3, 5 Dinitrosalicylic acid method [7]. Non Reducing sugars was calculated by subtracting the value of reducing sugar from the total sugar. Total microbial count by serial dilution technique [8] and spread on a nutrient agar (NA) plate and incubated at 30-35°C for 2-3 days in an incubator. The data on weed density and biomass were transformed to square root transformation $\sqrt{(x+0.5)}$ to normalize their distribution.

3. RESULTS AND DISCUSSION

3.1 Weed Density and Dry Weight

At harvest, higher weed density and dry weight were registered under the weedy check plot (T₁₀). Among the different treatments, the weed free plot (T₉) recorded significantly the lowest weed density and dry weight, which is statistically at par to IC & HW at 15 and 30 DAS (T₈). This is followed by the PE application of atrazine 50 WP + IC & HW (T₁) which is statistically at par with PE application of atrazine 50 WP *fb* mesotrione + atrazine 44.97 SC (Premix) at 30 DAS, (T₇) in 2022-23, 2023-24. This might be due to inhibition of carotenoid biosynthesis by inhibiting the hydroxyphenylpyruvate dioxygenase (HPPD) enzyme, which results in plastoquinone (PQ) synthesis inhibition in weeds (Duke et al. [9], Wichert et al. (1999), Takano et al. [10], Simarmata et al. [11]).

3.2 Weed Control Efficiency and Weed Index

After harvest highest weed control efficiency was observed in the weed free plot (T₉) followed by IC & HW at 15 and 30 DAS (T₈) due to excellent performance in controlling all the categories of weeds. This was followed by the PE application of atrazine 50 WP @ 500 g/ha + IC & HW (T₁) with higher WCE followed by PE application of atrazine 50 WP 500 g/ha *fb* mesotrione + atrazine 44.97 SC (Premix) @ 875 g/ha at 30

DAS, (T₇) in 2022-23, 2023-24, respectively (Table 1) due to broad-spectrum weed control and reduced total weed dry weight by inhibiting the plastoquinone biosynthesis and gives rise to bleaching symptoms on new growth in target plants and thereby reduce the dry weight of all categories of weeds.

Among the different weed management treatments, higher WI was recorded under the weedy check plot (T₁₀), which indicates that the unrestricted weed growth reduced the sweet sorghum grain yield and fodder yield. Besides the weed free plot (T₉), the lower WI was noted under the IC & HW at 15 and 30 DAS (T₈) followed by PE application of atrazine 50 WP 500 g/ha + IC & HW (T₁) followed by PE application of atrazine 50 WP @ 500 g/ha *fb* mesotrione + atrazine 44.97 SC (Premix) @ 875 g/ha at 30 DAS, (T₇), PE application of atrazine 50 WP @ 500 g/ha + IC & HW (T₁) respectively (Table 1). Lower weed index might be due to lower weed population and dry weight of weeds and high weed control efficiency which led to higher yield. This might be due to elimination of weeds by integration of herbicides, interculturing and manual weeding. The combined effect on dry weight of weeds and grain yield under these treatments might have been responsible for excellent weed indices.

3.3 Crop Growth Parameters

3.3.1 Phytotoxicity

Topramezone and tembotrione applied at 30 DAS showed slight stunting or discoloration in sweet sorghum with phytotoxicity rating of '1' (Table 2), which indicates slight stunting injury due to reduction in internodal length or discoloration in sweet sorghum. This may be due to inhibition of D₁ protein in photosystem-II in crop plants, which in turn stop the photosynthesis leading to slight stunted growth and discoloration but there was no stand loss and the crop fully recovered within 25-30 days. These results were in conformity with the finding of Galon *et al.* [12] in sweet sorghum.

3.3.2 Effect on growth parameters and days to 50 per cent flowering

At 60 DAS and at harvest the weed free plot (T₉) produced significantly higher plant height, LAI in pooled results (Table 2 and Table 3), which remained statistically at par with IC & HW at 15 and 30 DAS (T₈). The next best treatment is the



Plate 1. Overall view of the experimental field of sweet sorghum at 40 DAS



Plate 2. Weed occurrence in sweet sorghum crop in unweeded control at 30, 60 DAS and 90 DAS

PE application of atrazine 50 WP @ 500 g/ha *fb* mesotrione + atrazine 44.97 SC (Premix) @ 875 g/ha at 30 DAS, (T₇) which is statistically at par with the atrazine 50 WP @ 500 g/ha as a pre-emergence *fb* intercultivation and hand weeding (IC & HW) at 30 DAS (T₁).

Among the different treatments, the weed-free check (T₉) took significantly fewer days to reach 50% flowering in pooled results. This remained statistically at par with the rest of the treatments (Table 3) except for the Weedy check plot (T₁₀), which recorded higher days to 50% flowering during the the pooled results.

3.4 Effect on Yield Attributes and Yield

Significantly higher grain weight per earhead (g), grain and fodder yield (kg ha⁻¹) (Table 4 and Table 5) was recorded with the weed free plot (T₉), which remained statistically at par with the IC & HW at 15 and 30 DAS (T₈), PE application of atrazine 50 WP 500 g/ha *fb* mesotrione + atrazine 44.97 SC (Premix) @ 875 g/ha at 30 DAS, (T₇) and PE application of atrazine 50 WP 500 g/ha *fb* intercultivation and hand weeding (IC & HW) at 30 DAS (T₁) with higher yield attributes and yield in pooled results (Table 5 and Table 6). The increased sweet sorghum yield is

due to reduced weed competition, allowing more nutrients to be absorbed by the crop and mobilized to the grain. The combination of PE atrazine and PoE application of mesotrione + atrazine, along with manual weeding, provided broad-spectrum weed control, significantly boosting yield compared to Weedy check plot. Significantly lower grain and fodder yield were recorded under the Weedy check plot (T10).

Results reported in (Table 5) revealed that different weed management treatments did not exert their significant effects on 1000 grain weight in 2022-23, 2023-24 and pooled data. The present findings are within the close vicinity of those reported with different weed management treatments by Mishra et al. [13], Mukherjee et al. [14], Krishnamurthy et al. [15], Kumar et al. [16].



Plate 3. Sweet sorghum crop at 100 DAS with PE application atrazine 50 WP

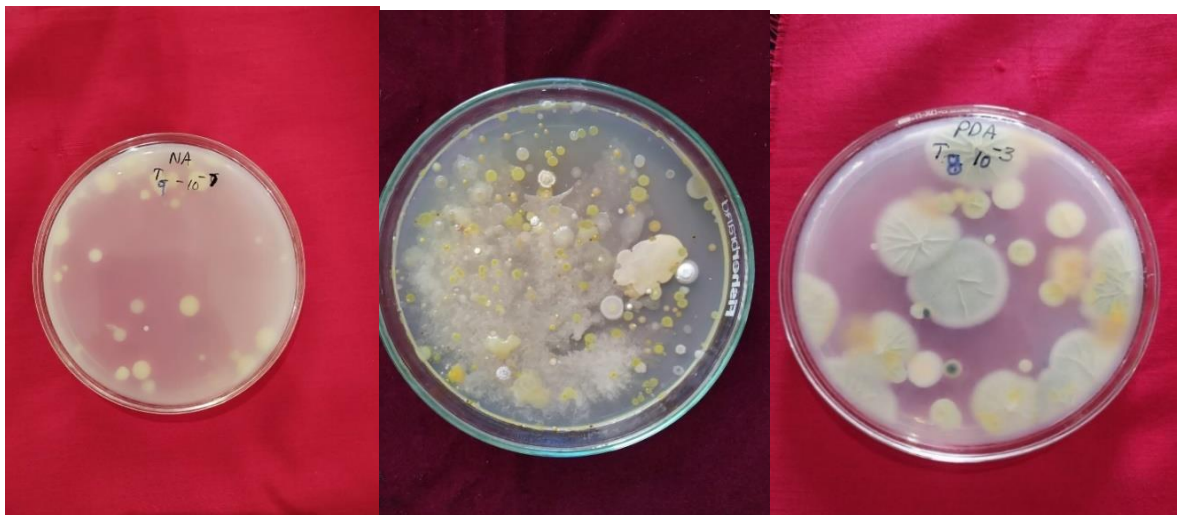


Plate 4. Microbial population analysis

Table 1. Effect of different treatments on total weed density, dry weight, weed control efficiency and weed index at harvest

| Treatments | At Harvest | | | | | | | |
|--|---------------------------------------|-------------------|--|-------------------|--------------------------------|---------|--------------------|---------|
| | Weed density (No./m ²) | | Weed dry weight (g/m ²) | | Weed Control Efficiency (%) | | Weed Index (WI) | |
| | 2022-23 | 2023-24 | 2022-23 | 2023-24 | 2022-23 | 2023-24 | 2022-23 | 2023-24 |
| Atrazine 50 WP 500 g/ha as PE <i>fb</i> IC & HW at 30 DAS | 6.00 (39.17) | 5.87 (34.78) | 6.82 (46.22) | 6.16 (40.69) | 80.31 | 82.13 | 8.12 | 7.57 |
| Atrazine 50 WP 500 g/ha as PE <i>fb</i> 2,4-D (SS) 95 SP 500 g/ha as PoE 30 DAS | 8.63 (74.50) | 8.32 (69.50) | 9.17 (83.75) | 8.83 (77.65) | 64.33 | 65.89 | 27.00 | 20.25 |
| Atrazine 50 WP 500 g/ha as PE <i>fb</i> Halosulfuron- methyl 75 WG 60 g/ha as PoE at 30 DAS | 10.15 (102.90) | 9.81 (96.20) | 11.01 (121.54) | 10.66 (113.58) | 48.24 | 50.11 | 36.05 | 35.12 |
| Atrazine 50 WP 500 g/ha as PE <i>fb</i> Topramezone 33.6 SC 25 g/ha as PoE at 30 DAS | 8.76 (76.40) | 8.43 (70.70) | 9.28 (85.90) | 8.91 (79.02) | 63.41 | 65.28 | 26.92 | 20.05 |
| Atrazine 50 WP 500 g/ha as PE <i>fb</i> Clodinafop- propargyl 15 WP 60 g/ha as PoE at 30 DAS | 11.17 (124.30) | 10.83 (116.80) | 11.88 (140.76) | 11.48 (132.08) | 40.05 | 41.98 | 36.34 | 35.32 |
| Atrazine 50 WP 500 g/ha as PE <i>fb</i> Tembotrione 42 SC 100 g/ha PoE at 30 DAS | 8.61 (73.90) | 8.33 (69.10) | 9.10 (83.15) | 8.81 (77.25) | 64.58 | 66.06 | 27.20 | 20.33 |
| Atrazine 50 WP 500 g/ha as PE <i>fb</i> Mesotrione + Atrazine 44. 97 SC (Premix) 875 g/ha at 30 DAS | 6.54 (42.30) | 6.09 (36.70) | 7.05 (49.47) | 6.56 (42.68) | 78.93 | 81.25 | 7.34 | 7.29 |
| IC & HW at 15 and 30 DAS | 1.79 (2.70) | 1.61 (2.10) | 2.01 (3.53) | 2.41 (5.31) | 98.50 | 97.67 | 5.34 | 5.31 |
| Weed free plot | 1.52 (1.80) | 1.45 (1.60) | 1.54 (1.88) | 1.49 (1.72) | 99.20 | 99.25 | 0.00 | 0.00 |
| Weedy check plot | 14.30 (204.50) | 14.05 (197.50) | 15.31 (234.79) | 15.09 (227.63) | 0.00 | 0.00 | 49.59 | 47.51 |
| SEm ± | 0.48 | 0.40 | 0.43 | 0.52 | - | - | - | - |
| C.D. at 5% | 1.44 | 1.19 | 1.29 | 1.54 | - | - | - | - |

Data given in parenthesis are original values. Original data subjected to square root transformation
WCE: weed control efficiency; WI: weed index; IC: Intercultivation; fb: followed by

Table 2. Effect of different treatments on on phytotoxicity symptoms, plant height at 60 DAS and at harvest

| Treatments | Phytotoxicity scoring | | Plant height (cm) at 60 DAS | Plant height (cm) at harvest |
|--|-----------------------|-----|--------------------------------|---------------------------------|
| | PE | PoE | Pooled | Pooled |
| Atrazine 50 WP 500 g/ha as PE <i>fb</i> IC & HW at 30 DAS | 0 | 0 | 149.99 | 166.59 |
| Atrazine 50 WP 500 g/ha as PE <i>fb</i> 2,4-D (SS) 95 SP 500 g/ha as PoE 30 DAS | 0 | 0 | 129.15 | 140.05 |
| Atrazine 50 WP 500 g/ha as PE <i>fb</i> Halosulfuron- methyl 75 WG 60 g/ha as PoE at 30 DAS | 0 | 0 | 127.35 | 134.15 |
| Atrazine 50 WP 500 g/ha as PE <i>fb</i> Topramezone 33.6 SC 25 g/ha as PoE at 30 DAS | 0 | 1 | 104.25 | 143.25 |
| Atrazine 50 WP 500 g/ha as PE <i>fb</i> Clodinafop-propargyl 15 WP 60 g/ha as PoE at 30 DAS | 0 | 0 | 126.55 | 137.35 |
| Atrazine 50 WP 500 g/ha as PE <i>fb</i> Tembotrione 42 SC 100 g/ha PoE at 30 DAS | 0 | 1 | 103.45 | 142.15 |
| Atrazine 50 WP 500 g/ha as PE <i>fb</i> Mesotrione + Atrazine 44. 97 SC (Premix) 875 g/haat 30 DAS | 0 | 0 | 149.15 | 168.45 |
| IC & HW at 15 and 30 DAS | 0 | 0 | 174.05 | 191.95 |
| Weed free plot | 0 | 0 | 176.95 | 199.95 |
| Weedy check plot | - | - | 82.45 | 102.75 |
| SEm ± | - | - | 4.47 | 5.35 |
| C.D. at 5% | | | 12.82 | 15.34 |

Table 3. Effect of different treatments on days to 50 per cent flowering leaf area index at 60 DAS and at 90 DAS

| Treatments | Days to 50 per cent flowering | Leaf area index at 60 DAS | Leaf area index at 90 DAS |
|--|-------------------------------|---------------------------|---------------------------|
| | Pooled | Pooled | Pooled |
| Atrazine 50 WP 500 g/ha as PE fb IC & HW at 30 DAS | 77 | 2.24 | 3.82 |
| Atrazine 50 WP 500 g/ha as PE fb 2,4-D (SS) 95 SP 500 g/ha as PoE 30 DAS | 79 | 1.54 | 3.12 |
| Atrazine 50 WP 500 g/ha as PE fb Halosulfuron- methyl 75 WG 60 g/ha as PoE at 30 DAS | 80 | 1.43 | 2.73 |
| Atrazine 50 WP 500 g/ha as PE fb Topramezone 33.6 SC 25 g/ha as PoE at 30 DAS | 80 | 1.16 | 3.01 |
| Atrazine 50 WP 500 g/ha as PE fb Clodinafop-propargyl 15 WP 60 g/ha as PoE at 30 DAS | 80 | 1.42 | 2.74 |
| Atrazine 50 WP 500 g/ha as PE fb Tembotrione 42 SC 100 g/ha PoE at 30 DAS | 79 | 1.15 | 3.00 |
| Atrazine 50 WP 500 g/ha as PE fb Mesotrione + Atrazine 44. 97 SC (Premix) 875 g/ha at 30 DAS | 80 | 2.25 | 3.83 |
| IC & HW at 15 and 30 DAS | 78 | 2.86 | 4.44 |
| Weed free plot | 77 | 2.92 | 4.50 |
| Weedy check plot | 92 | 0.92 | 2.33 |
| SEm ± | 2.68 | 0.03 | 0.05 |
| C.D. at 5% | 7.7 | 0.09 | 0.15 |

Table 4. Effect of different treatments on grain weight per earhead and test weight

| Treatments | Grain weight per earhead (g) | Test weight (g) |
|--|------------------------------|-----------------|
| | Pooled | Pooled |
| Atrazine 50 WP 500 g/ha as PE <i>fb</i> IC & HW at 30 DAS | 31.43 | 18.44 |
| Atrazine 50 WP 500 g/ha as PE <i>fb</i> 2,4-D (SS) 95 SP 500 g/ha as PoE 30 DAS | 21.70 | 18.91 |
| Atrazine 50 WP 500 g/ha as PE <i>fb</i> Halosulfuron- methyl 75 WG 60 g/ha as PoE at 30 DAS | 15.97 | 18.14 |
| Atrazine 50 WP 500 g/ha as PE <i>fb</i> Topramezone 33.6 SC 25 g/ha as PoE at 30 DAS | 21.20 | 18.88 |
| Atrazine 50 WP 500 g/ha as PE <i>fb</i> Clodinafop-propargyl 15 WP 60 g/ha as PoE at 30 DAS | 15.67 | 18.09 |
| Atrazine 50 WP 500 g/ha as PE <i>fb</i> Tembotrione 42 SC 100 g/ha PoE at 30 DAS | 20.70 | 19.12 |
| Atrazine 50 WP 500 g/ha as PE <i>fb</i> Mesotrione + Atrazine 44. 97 SC (Premix) 875 g/haat 30 DAS | 31.90 | 19.19 |
| IC & HW at 15 and 30 DAS | 31.93 | 19.38 |
| Weed free plot | 33.40 | 19.39 |
| Weedy check plot | 11.50 | 17.16 |
| SEm ± | 0.75 | 0.63 |
| C.D. at 5% | 2.16 | NS |

Table 5. Effect of different treatments on grain, dry fodder and harvest index at Harvest

| Treatments | Grain yield (kg ha ⁻¹) | Dry fodder yield (kg ha ⁻¹) | B:C ratio |
|--|------------------------------------|---|-----------|
| | Pooled | Pooled | Average |
| Atrazine 50 WP 500 g/ha as PE fb IC & HW at 30 DAS | 2267 | 8280 | 2.67 |
| Atrazine 50 WP 500 g/ha as PE fb 2,4-D (SS) 95 SP 500 g/ha as PoE 30 DAS | 1879 | 7288 | 2.61 |
| Atrazine 50 WP 500 g/ha as PE fb Halosulfuron- methyl 75 WG 60 g/ha as PoE at 30 DAS | 1585 | 6231 | 2.21 |
| Atrazine 50 WP 500 g/ha as PE fb Topramezone 33.6 SC 25 g/ha as PoE at 30 DAS | 1883 | 7215 | 2.62 |
| Atrazine 50 WP 500 g/ha as PE fb Clodinafop-propargyl 15 WP 60 g/ha as PoE at 30 DAS | 1579 | 6139 | 2.16 |
| Atrazine 50 WP 500 g/ha as PE fb Tembotrione 42 SC 100 g/ha PoE at 30 DAS | 1876 | 7186 | 2.58 |
| Atrazine 50 WP 500 g/ha as PE fb Mesotrione + Atrazine 44. 97 SC (Premix) 875 g/ha at 30 DAS | 2281 | 8203 | 2.89 |
| IC & HW at 15 and 30 DAS | 2330 | 8248 | 2.08 |
| Weed free plot | 2460 | 8474 | 2.06 |
| Weedy check plot | 1266 | 4838 | 1.84 |
| SEm ± | 69 | 211 | - |
| C.D. at 5% | 199 | 604 | - |

3.5 Economics

Among different weed management treatments, higher B:C ratio (Table 5) was obtained with the PE application of atrazine 50 WP @ 500 g/ha fb mesotrione + atrazine 44.97 SC (Premix) @ 875 g/ha at 30 DAS, (T₇), followed by atrazine 50 WP @ 500 g/ha as PE fb IC & HW at 30 DAS (T₁) with B:C ratio in average of both years.

3.6 Effect on Quality Parameters

Higher reducing, non-reducing sugars and total sugar in juice (Table 6) were recorded under weed-free conditions (T₉), statistically at par with IC & HW at 15 and 30 DAS (T₈), PE application of atrazine 50 WP @ 500 g/ha fb mesotrione + atrazine 44.97 SC (Premix) @ 875 g/ha at 30 DAS, (T₇) and PE application of atrazine 50 WP @ 500 g/ha + IC & HW (T₁). This improvement is due to better weed control, leading to enhanced nutrient absorption by the crop and increased sucrose accumulation in sweet sorghum stems. Effective weed management allows more efficient use of resources, boosting sucrose transport from source to sink. The lowest values of quality parameters were observed under the Weedy check plot (T₁₀), which can be ascribed to severe competition by weeds with the crop and resulted in low absorption of nutrients and ultimately resulted in the inferior quality. Similar results have been found by Reis *et al.* [17].

3.7 Effect on Microbial Population

There is non-significant effect on the total microbial population (bacterial, fungi and actinomycetes) before sowing in the pooled results (Table 7).

3.7.1 Total microbial population at 20 days after application of PoE herbicides

As far as total bacterial, fungal and actinomycetes population in soil is concern, significantly highest total population in soil was observed in Weedy check plot (T₁₀) which remained statistically at par with the treatments weed free plot (T₉), IC & HW at 15 and 30 DAS (T₈). Minimum bacterial population was observed in all the herbicidal treated plots, which performed similarly to each other (Table 7).

Shortly after application of herbicides significant differences in population of soil microorganisms was noticed as compared to their population before herbicide application. Such inhibitory effect of herbicides used in the study persisted upto 30 days after spraying of herbicides in the crop with respect to either pre-emergence single herbicide or post-emergence herbicides. However, under sequential application of pre-emergence herbicide on one day after sowing followed by post-emergence spray on 30 days after sowing the effect of herbicides on soil micro-organisms population extended beyond 30 days after spraying of herbicides in the crop.

3.7.2 Total microbial population at harvest

As far as total bacterial, fungal and actinomycetes population in soil is concern, significantly highest total population in soil was observed in atrazine 50 WP @ 500 g/ha as PE fb tembotrione 42 SC @ 100 g/ha PoE at 30 DAS (T₆) which remained statistically at par with the treatments atrazine 50 WP @ 500 g/ha as PE fb topamezone 33.6 SC 25 g/ha as PoE at 30 DAS (T₄), atrazine 50 WP @ 500 g/ha as PE fb 2,4-D (SS) 95 SP @ 500 g/ha as PoE 30 DAS (T₂), atrazine 50 WP @ 500 g/ha as PE fb halosulfuron- methyl 75 WG @ 60 g/ha as PoE at 30 DAS (T₃), atrazine 50 WP @ 500 g/ha as PE fb clodinafop-propargyl 15 WP @ 60 g/ha as PoE at 30 DAS (T₅), PE application of atrazine 50 WP @ 500 g/ha fb mesotrione + atrazine 44.97 SC (Premix) @ 875 g/ha at 30 DAS, (T₇) in the pooled results (Table 7). The microbial population was higher with application of pre-emergence herbicides followed by recommended dose of post-emergence herbicides. This might be due to the fact that applied herbicides themselves might serve as source of carbon to microbes and might also increase microbial multiplication on increased supply of nutrients available in the form of microorganisms killed by herbicides. When herbicide compound has been decomposed and have no toxic properties, hence it can be a source of organic matter for both sensitive and tolerant soil microorganisms and can increase the growth of bacterial, fungal and actinomycetes populations progressively. Similar results of increased total microbial population at harvest were observed by Hatti *et al.* [18], Veeresh *et al.* [19], Tyagi *et al.* [20].

Table 6. Effect of different treatments on reducing sugar in juice, non-reducing sugar in juice and total sugars in juice

| Treatments | Reducing sugar in juice (%) | Non-reducing sugar in juice (%) | Total sugar (%) |
|---|-----------------------------|---------------------------------|-----------------|
| | Pooled | Pooled | Pooled |
| Atrazine 50 WP 500 g/ha as PE <i>fb</i> IC & HW at 30 DAS | 1.73 | 10.85 | 12.58 |
| Atrazine 50 WP 500 g/ha as PE <i>fb</i> 2,4-D (SS) 95 SP 500 g/ha as PoE 30 DAS | 1.36 | 8.97 | 10.32 |
| Atrazine 50 WP 500 g/ha as PE <i>fb</i> Halosulfuron- methyl 75 WG 60 g/ha as PoE at 30 DAS | 1.17 | 7.81 | 8.97 |
| Atrazine 50 WP 500 g/ha as PE <i>fb</i> Topramezone 33.6 SC 25 g/ha as PoE at 30 DAS | 1.36 | 8.90 | 10.26 |
| Atrazine 50 WP 500 g/ha as PE <i>fb</i> Clodinafop-propargyl 15 WP 60 g/ha as PoE at 30 DAS | 1.19 | 7.40 | 8.58 |
| Atrazine 50 WP 500 g/ha as PE <i>fb</i> Tembotrione 42 SC 100 g/ha PoE at 30 DAS | 1.35 | 8.85 | 10.19 |
| Atrazine 50 WP 500 g/ha as PE <i>fb</i> Mesotrione + Atrazine 44. 97 SC (Premix) 875 g/ha at 30 DAS | 1.75 | 10.86 | 12.61 |
| IC & HW at 15 and 30 DAS | 1.77 | 11.27 | 13.03 |
| Weed free plot | 1.78 | 11.33 | 13.10 |
| Weedy check plot | 0.97 | 6.05 | 7.02 |
| SEm ± | 0.03 | 0.18 | 0.19 |
| C.D. at 5% | 0.07 | 0.51 | 0.54 |

Table 7. Effect of different treatments on pooled total microbial population before sowing, at 20 DAA and at harvest

| Treatments | Before sowing | | | 20 DAA | | | At harvest | | |
|---|---------------------------------------|------------------------------------|--|---------------------------------------|------------------------------------|--|---------------------------------------|------------------------------------|--|
| | Bacteria ($\times 10^7$ CFU/g) | Fungi ($\times 10^3$ CFU/g) | Actinomy cetes ($\times 10^3$ CFU/g) | Bacteria ($\times 10^7$ CFU/g) | Fungi ($\times 10^3$ CFU/g) | Actinomy cetes ($\times 10^3$ CFU/g) | Bacteria ($\times 10^7$ CFU/g) | Fungi ($\times 10^3$ CFU/g) | Actinomy cetes ($\times 10^3$ CFU/g) |
| Atrazine 50 WP 500 g/ha as PE <i>fb</i> IC & HW at 30 DAS | 24.11 | 21.81 | 28.05 | 21.45 | 19.95 | 25.15 | 25.02 | 22.49 | 27.82 |
| Atrazine 50 WP 500 g/ha as PE <i>fb</i> 2,4-D (SS) 95 SP 500 g/ha as PoE 30 DAS | 23.75 | 23.10 | 28.45 | 18.15 | 17.00 | 21.85 | 32.80 | 30.20 | 35.85 |
| Atrazine 50 WP 500 g/ha as PE <i>fb</i> Halosulfuron- methyl 75 WG 60 g/ha as PoE at 30 DAS | 23.95 | 22.40 | 27.95 | 18.35 | 16.30 | 22.25 | 33.00 | 29.50 | 36.15 |
| Atrazine 50 WP 500 g/ha as PE <i>fb</i> Topramezone 33.6 SC 25 g/ha as PoE at 30 DAS | 23.65 | 22.70 | 27.75 | 18.05 | 16.60 | 21.75 | 32.70 | 29.80 | 35.75 |
| Atrazine 50 WP 500 g/ha as PE <i>fb</i> Clodinafop-propargyl 15 WP 60 g/ha as PoE at 30 DAS | 24.95 | 23.20 | 28.35 | 18.68 | 17.10 | 21.55 | 33.33 | 30.30 | 35.55 |
| Atrazine 50 WP 500 g/ha as PE <i>fb</i> Tembotrione 42 SC 100 g/ha PoE at 30 DAS | 24.45 | 22.90 | 27.45 | 18.85 | 16.80 | 22.15 | 33.50 | 30.25 | 36.25 |
| Atrazine 50 WP 500 g/ha as PE <i>fb</i> Mesotrione + Atrazine 44. 97 SC (Premix) 875 g/ha at 30 DAS | 23.65 | 22.30 | 28.65 | 18.05 | 16.20 | 21.25 | 32.70 | 29.40 | 35.25 |
| IC & HW at 15 and 30 DAS | 24.65 | 23.50 | 27.85 | 24.38 | 23.17 | 29.25 | 29.00 | 26.10 | 31.15 |
| Weed free plot | 24.15 | 23.30 | 28.15 | 25.45 | 23.90 | 30.15 | 29.10 | 26.23 | 32.05 |
| Weedy check plot | 24.95 | 22.30 | 27.85 | 26.15 | 24.40 | 30.45 | 28.93 | 25.73 | 32.35 |
| SEm \pm | 0.44 | 0.42 | 0.46 | 0.41 | 0.31 | 0.43 | 0.54 | 0.46 | 0.53 |
| C.D. at 5% | 1.27 | 1.22 | 1.31 | 1.19 | 0.89 | 1.24 | 1.53 | 1.31 | 1.53 |

Table 8. Phytotoxicity of different herbicides on bioassay parameters of succeeding crops at 30 DAS

| Treatments | Groundnut | Sesame | Pearlmillet | Soyabean |
|---|-------------|-------------|-------------|-------------|
| | Pooled | Pooled | Pooled | Pooled |
| Atrazine 50 WP 500 g/ha as PE <i>fb</i> IC & HW at 30 DAS | 7.05 | 17.44 | 19.97 | 8.46 |
| Atrazine 50 WP 500 g/ha as PE <i>fb</i> 2,4-D (SS) 95 SP 500 g/ha as PoE 30 DAS | 7.29 | 21.45 | 23.45 | 8.99 |
| Atrazine 50 WP 500 g/ha as PE <i>fb</i> Halosulfuron- methyl 75 WG 60 g/ha as PoE at 30 DAS | 7.01 | 19.55 | 21.55 | 8.70 |
| Atrazine 50 WP 500 g/ha as PE <i>fb</i> Topramezone 33.6 SC 25 g/ha as PoE at 30 DAS | 7.18 | 21.65 | 23.65 | 8.88 |
| Atrazine 50 WP 500 g/ha as PE <i>fb</i> Clodinafop-propargyl 15 WP 60 g/ha as PoE at 30 DAS | 6.93 | 20.58 | 22.58 | 8.63 |
| Atrazine 50 WP 500 g/ha as PE <i>fb</i> Tembotrione 42 SC 100 g/ha PoE at 30 DAS | 7.29 | 21.95 | 23.95 | 8.99 |
| Atrazine 50 WP 500 g/ha as PE <i>fb</i> Mesotrione + Atrazine 44. 97 SC (Premix) 875 g/ha at 30 DAS | 7.31 | 21.05 | 23.05 | 9.01 |
| IC & HW at 15 and 30 DAS | 7.53 | 18.92 | 20.92 | 9.23 |
| Weed free plot | 7.63 | 20.37 | 22.37 | 9.33 |
| Weedy check plot | 7.13 | 19.45 | 21.45 | 8.83 |
| SEm ± | 0.31 | 0.55 | 0.60 | 0.24 |
| C.D. at 5% | NS | NS | NS | NS |
| C.V.% | 7.29 | 7.67 | 7.66 | 7.47 |

3.8 Bioassay Studies

Bioassay is a major tool for quantitative and qualitative determination of herbicides persistence effect. In this method, the property of a chemical is measured in terms of some biological responses using indicator plants grown in a field and is compared with that of similar plant grown in untreated soil.

3.9 Residual Effect on Succeeding Crops

The residual effect of different herbicides applied in sweet sorghum crop was found non-significant on germination percentage (10 DAS) of succeeding crops *i.e.*, groundnut, sesame, pearl millet and soyabean (Table 8). The results clearly indicated that different herbicides *viz.*, atrazine 50 WP @ 500 g/ha pre-emergence as well as 2,4-D (SS) @ 500 g/ha, halosulfuron- methyl 75 WG @ 60 g/ha as PoE at 30 DAS, topramezone 33.6 SC @ 25 g/ha, Clodinafop-propargyl 15 WP @ 60 g/ha, tembotrione 42 SC @ 100 g/ha, *fb* mesotrione + atrazine 44. 97 SC (Premix) @ 875 g/ha as post-emergence herbicides did not leave their residual phytotoxic effect in the soil after harvesting of sweet sorghum crop on succeeding crops *i.e.*, groundnut, sesame, pearl millet and soyabean. Hence, it is safe to sow groundnut, sesame, pearl millet and soyabean after harvesting of sweet sorghum crop in which pre-emergence application and post-emergence application have been made. Results corroborate with those of Chowdhuri *et al.* [21], Siabusu *et al.* [22], Rani *et al.* [23], Saimaheswari *et al.* [24].

4. CONCLUSION

On the basis of polled data of the two-year experiment we concludes that effective weed control and profitable sweet sorghum production can be achieved with a PE application of atrazine 50 WP (500 g/ha) *fb* mesotrione + atrazine (875 g/ha) at 30 DAS. after 20 days, weedy check plot had the highest microbial population. After harvest, atrazine *fb* PoE treated plots had the highest microbial population, while the lowest was in plots with atrazine *fb* inter-cultivation and hand weeding. There is no any residual phytotoxicity effect was observed, making it safe for subsequent crops like groundnut, sesame, pearl millet, and soybean.

DISCLAIMER (ARTIFICIAL INTELLIGENCE)

Author(s) hereby declare that generative AI technologies such as Large Language Models,

etc. have been used during the writing or editing of manuscripts. This explanation will include the name, version, model, and source of the generative AI technology and as well as all input prompts provided to the generative AI technology.

Details of the AI usage are given below:

1. ChatGP

COMPETING INTERESTS

Authors have declared that no competing interests exist.

REFERENCES

1. Dar WD. Towards a Prosperous, Food-secure and Resilient Dryland Tropics: A Compendium of Speeches by William D Dar January–December, 2012.
2. Bitzer MJ. Production of sweet sorghum for syrup in Kentucky. Extension. Bult., Colleg, Agric., Univ. Kentucky, USA; 1997.
3. Knezevic SZ, Evans SP, Blankenship EE, Van Acker RC. and Lindquist JL. Critical period for weed control the concept and data analysis. *Weed Science*. 2002;50(6): 773-786.
4. Silva AF, Silva C, Vale WG, Petter FA, Karam D. Interferencia de plantas daninhas nacultura do sorgo sacarino. *Bragantia*. 2014;73(4):438-445.
5. Abbas T, Zahir ZA, Naveed M, Kremer RJ. Limitations of existing weed control practices necessitate development of alternative techniques based on biological approaches. *Advances in Agronomy*. 2018;147:239-280.
6. Tuinstra MR, Soumana S, Khatib K. Efficacy of herbicide seed treatments for controlling infestation of sorghum. *Crop Science*. 2009;49:923-929.
7. Miller GL. Use of dinitrosalicyclic acid reagent for determination of reducing sugar; 1959.
8. Dhingra OB, Sinclair JB. Basic plant pathology methods. 1993. 2nd Edition, CRC Press, Boca Raton.
9. Duke SO, Dayan FE, Romagni JG, Rimando AM. Natural products as sources of herbicides: Current status and future trends. *Weed Research*. 2000;40:99-111.
10. Takano HK, Rubin RDS, Marques LH, Fadin DA, Kalsing A, Neves R. Potential use of herbicides in different sorghum

- hybrids. African Journal of Agricultural Research. 2016;11(26):2277-2285.
11. Simarmata M, Turmudi E, Sitinjak J, Setyowati N. Different application time of atrazine and mesotrione mixture to control weeds on grain sorghum (*Sorghum bicolor* L. Moench). International Journal of Agricultural Technology. 2017;13(7.2): 1761-1772.
 12. Galon L, Fernandes FF, Andres A, Silva AFD, Forte CT. Selectivity and efficiency of herbicides in weed control on sweet sorghum. Pesquisa Agropecuária Tropical. 2016;46:123-131.
 13. Mishra JS, Rao SS, Dixit A. Evaluation of new herbicides for weed control and crop safety in rainy season sorghum. Indian Journal of Weed Science. 2012;44(1):71–72.
 14. Mukherjee PK, Singh P, Sondhia S, Sagar RL. Biology of weed flora, weed dynamics and weed management in different fodder crops. Environment and Ecology. 2019;18(2):320-322.
 15. Krishnamurthy D, Gangaiah B, Tonapi, VA. Non suitability of tembotrione and topramezone for weed management in sorghum (*Sorghum bicolor* (L.) Moench). Indian Journal of Weed Science. 2021;53(4):381-386.
 16. Kumar KA, Bhagavathapriya T, Kumar YS, Babu KS, Prabhakar K, Parveen SI, Kiranmayi MJ, Jaya M. Weed dynamics, crop growth and yield attributes of grain sorghum response to pre and post emergence herbicides. The Pharma Innovation Journal. 2022;11(12):2631-2634.
 17. Reis RM, Freitas MS, Silva DV, Pereira GAM, De Jesus Passos ABR, Silva AF, Dos Reis MR. Effects of weed management and plant arrangements on yield index of sweet sorghum. Bioscience Journal. 2019;35(4):983-991.
 18. Hatti V, Sanjay MT, Prasad TR, Murthy KK, Kumbar B, Shruthi MK. Effect of new herbicide molecules on yield, soil microbial biomass and their phytotoxicity on maize (*Zea mays* L.) under irrigated conditions. The Bioscan. 2014;9(3):1127-1130.
 19. Veeresh H, Sanjay MT, Prasad TVR, Murthy KNK, Basavaraj K, Shruthi MK. Effect of new herbicide molecules on yield, soil microbial biomass and their phytotoxicity on maize (*Zea Mays* L.) under irrigated conditions. The Bio Scan. 2014;9(3):1127-1130.
 20. Tyagi S, Mandal SK, Rajesh K, Sunil K. Effect of different herbicides on soil microbial population dynamics in *rabi* maize (*Zea mays* L.). International Journal of Current Microbiology and Applied Sciences. 2018;7:3751-3758.
 21. Chaudhari DD, Patel VJ, Patel HK, Mishra A, Patel BD, Patel RB. Assessment of pre-mix broad spectrum herbicides for weed management in wheat. Indian Journal of Weed Science. 2017;49(1):33–35.
 22. Siabusu L, Kambikambi T, Lungu D, Chanda R. Efficacy and residual effects of Topramezone and Dicamba herbicide on weed control in selected crops (Doctoral dissertation, The University of Zambia); 2020.
 23. Rani BS, Chandrika V, Reddy GP, Sudhakar P, Nagamadhuri KV, Sagar GK. Residual effect of weed management practices executed in preceding maize on succeeding greengram. Legume Research. 2022; 45(5):631-638.
 24. Saimaheswari K, Sagar GK, Chandrika V, Sudhakar P, Krishna TG. Effect of nitrogen and weed management practices in maize and their residual effect on succeeding groundnut. Indian Journal of Weed Science. 2022;54(1):36–41.

Disclaimer/Publisher's Note: The statements, opinions and data contained in all publications are solely those of the individual author(s) and contributor(s) and not of the publisher and/or the editor(s). This publisher and/or the editor(s) disclaim responsibility for any injury to people or property resulting from any ideas, methods, instructions or products referred to in the content.

© Copyright (2024): Author(s). The licensee is the journal publisher. This is an Open Access article distributed under the terms of the Creative Commons Attribution License (<http://creativecommons.org/licenses/by/4.0>), which permits unrestricted use, distribution, and reproduction in any medium, provided the original work is properly cited.

Peer-review history:
The peer review history for this paper can be accessed here:
<https://www.sdiarticle5.com/review-history/123840>