



Effect of Tiger Nut Meal on Food/Water Intake, Body Weight Changes and Semen Abnormality in Androgen-Induced BPH in Adult Male Wistar Rats

D. I. Izunwanne^{1*}, E. E. Osim², P. Nwankpa³, M. U. Elendu¹,
P. C. Ugwuezumba¹ and D. C. Akukwu⁴

¹Department of Human Physiology, Imo State University, Owerri, Nigeria.

²Department of Human Physiology, University of Calabar, Nigeria.

³Department of Medical Biochemistry, Imo State University, Owerri, Nigeria.

⁴Department of Human Anatomy, Imo State University, Owerri, Nigeria.

Authors' contributions

The work was carried out in collaboration among all authors. Authors DII, PN and EEO designed the study, managed the literature searches, performed the statistical analysis, wrote the protocol and the first draft of the manuscript. Authors MUE, PCU and DCA managed the statistical analysis and reviewed the manuscript. All authors read and approved the final manuscript.

Article Information

Editor(s):

(1) Dr. Syed Faisal Zaidi, King Saud Bin Abdulaziz University for Health Sciences, Saudi Arabia.

Reviewers:

(1) Md. Nahian Rahman, University of Dhaka, Bangladesh.

(2) Shaidaton Nisha, University of Dhaka, Bangladesh.

(3) Md. Serajul Islam, Jiangnan University, China.

Complete Peer review History, details of the editor(s), Reviewers and additional Reviewers are available here:
<https://www.sdiarticle5.com/review-history/82240>

Original Research Article

Received 23 October 2021

Accepted 27 December 2021

Published 29 December 2021

ABSTRACT

Introduction: Food and water intake correlate positively. This may be due to their mutual dependence on body size, but an additional mechanism directly linking food and water intakes may also be involved. It is also believed that *Cyperus esculentus* (tiger nut) has some fertility boosting effects. However, scientific validation of some the fertility boosting belief concerning tiger nut is lacking.

Objective: The aim of this project was to study the effects of tiger nut meal on Food and water intake, Total Protein, Body weight changes, Semen consistency and Total abnormality of the sperm cell following induction of BPH and its treatment.

Methods: A total of sixty (60) male rats weighing between 160 – 200 g were used in this study.

They were divided into six groups of ten rats per group. Benign prostate hyperplasia was induced in three groups of the rats (as stated in methodology) with 30 mg/kg sub-cutaneous injections of hormones containing dihydrotestosterone (DHT) and estradiol valerate dissolved in olive oil in the ratio of 10:1 (three times in a week, one day interval). Administration of tiger nut meal commenced immediately and lasted for two months. At the end of administration, blood sample was collected from the rat via cardiac puncture for the determination of Total Protein. Semen samples were collected for analysis of semen Total Abnormality and Consistency (Thickness). The food/water intake as well as body weight changes were also studied.

Results: Following the induction of BPH, the administration of tiger-nut meal showed some good effect on the rats. On Total Protein (TP), the administration of the tiger nut meal increased the TP levels in both the induced and non-induced ($p < 0.05$). On food and water intake, tiger nut meal enhances the intake of food at high dosage ($p < 0.05$) while at the same time, decreasing water intake in the rats ($p > 0.05$). On weight changes, the result showed a significant decrease in the weight of the rats. ($p > 0.05$). Again, the administration of tiger-nut meal significantly lowered the level of total abnormality of the semen recorded following the induction of BPH ($p > 0.05$) while at the same time, enhancing the Semen consistency (Thickness of the sperm) ($p < 0.05$).

Conclusion: Tiger nut meal lowered the rate of water intake, body weight of the rats and total semen abnormality while at the same time, enhancing food intake, Total Protein and semen consistency.

Keywords: Tigernut meal; food/water intake; body weight changes; semen abnormalities and BPH.

1. INTRODUCTION

Feeding, drinking and body weight are interrelated and influenced by both genetic and environmental factors [1]. They are critical variables in many types of experiments, such as those involving metabolism, nutrition, or dosage of pharmacological agents.

Food and water intake also correlated positively. This may be due to their mutual dependence on body size, but an additional mechanism directly linking food and water intakes may also be involved. Rodents on pelleted diet consume most of their water immediately before and after they eat food, which is probably due to both osmotic and volumetric stimulation of thirst [2]. Thus, rats that eat more would tend also to drink more. However, inspection of individual values indicates that a component of the variation in water intake is independent from food intake.

Food intake by the laboratory animal meets the energy requirements for maintenance, growth, physical activity, heat production, and other physiological processes. Water intake compensates for the losses by evaporation and by excretion in urine and faeces. Food and water intake show a marked daily variation, as they are strongly coupled to the circadian rhythm of waking-sleeping behaviour. Numerous biochemical and physiological factors are in turn connected with food and water intake and their subsequent daily variation may affect the

responsiveness of the animal to experimental stimuli. The availability of food and water thus contributes to the drama type of the experimental animal.

This study was designed to assess the effects of tiger nut on feeding, drinking and body weight changes including some semen parameters after the induction of Benign Prostate Hyperplasia (BPH). The hypotheses tested in this part of the study reported here were that tiger nut would enhance food and water intake moderately, prevent or reduce overweight and obesity and decrease semen toxicities in measured physiological parameters.

2. METHODS

2.1 Procurement of Tiger Nut Tubers

Tiger nut tubers were gotten from a local market at Owerri city, Imo State. The tiger nuts were identified and authenticated at the herbarium of the Department of Plant Science and Biotechnology, Faculty of Natural Sciences, Michael Okpara University of Agriculture, Umudike, Abia State. Its Voucher number is: MOUAU/ZEB/19/004.

For the preparation of tiger nut powder, the tubers were cleaned, washed and dried in a stream of hot air for an hour. The dried tubers were milled using a laboratory electric mill locally made.

2.2 Chemicals and Reagents

All chemicals used were purchased from Sigma Chemicals, St Louis, USA and were of analytical grade.

2.3 Procurement of the Animals

The wistar rats, (two months old) weighing 160-200g were procured from Pharmacology Department, University of Port Harcourt (Rivers State). The rats were housed in wooden netted cages and maintained under environmentally controlled room provided with a 12:12 hours light and dark cycle approximately at 25 °C. They were fed on pellets (Lab Feeds) and tap water. The rats were allowed to acclimatize to laboratory environment for 21 days before experimentation.

2.4 Preparation of Extract

The collected fresh tubers were dried in the shade at 25 °C for two weeks and thereafter, pulverized in a locally fabricated milling machine. Six hundred (600) grams of the pulverized material gotten were packed into the material chamber of the Soxhlet extractor and extracted by ethanol at a specific temperature (60 °C) for 48 hr. At the completion of extraction, the solvent in the extract was evaporated at 40 °C in a hot air oven to obtain a crude extract which weighed 49.18 g, representing a yield of 49.18%. The extract was preserved in the refrigerator until needed and is hereafter referred to as *C. esculentus* extract.

2.5 Acute Toxicity Test

The oral median lethal dose (LD₅₀) of the extracts was determined in rats according to the method of Lorke [3]. The rats were also monitored 24 hours after administration for signs of toxicity and/or mortality. The median lethal dose (LD₅₀) of the extract was estimated based on the observations in the second phase.

2.6 Preparation of 10% and 20% Tiger-nut Diet

Tiger-nut powder and the animal feed was weighed and calculated to give exactly the ratio of the tiger nut meal needed. For 20% of the tiger nut meal, 20g of tiger-nut powder was added to 80g of the animal feed (high dose) while for 10% of the tiger nut meal, 10g of tiger-nut powder was

added to 90g of the animal feed (low dose). The feed was thoroughly mixed before administering it to the animals.

2.7 Experimental Design

Group 1	Normal Control
Group 2	Negative control (BPH)
Group 3	BPH + Low dose (10% of meal)
Group 4	BPH + high dose (20% of meal)
Group 5	Normal + Low dose (10% of meal)
Group 6	Normal + high dose (20% of meal)

Note: The average weight of the rats is 180g and the administration of the tiger nut meal lasted for two months.

2.8 Induction of BPH

Rats in the test groups (groups 2, 3 and 4) weighing between 160 - 200g were given 30mg/kg sub-cutaneous injections of hormones containing DHT and estradiol valerate dissolved in olive oil in the ratio of 10:1 (three times in a week) as described by Izunwanne [4].

The administration of the tiger nut meal commenced immediately after the induction and it lasted a period of two months.

2.9 Collection of Blood Sample

After two months of administering the meal, the rats were anaesthetized by a brief exposure to chloroform vapour. Blood sample was collected by cardiac puncture and was used in the assay of some sex hormones.

2.10 Qualitative Phytochemical Studies on *Cyperus esculentus*

Phytochemical methods of Trease and Evans [5] and Harborne [6] were used in the study.

2.11 Quantitative Phytochemical Analysis of *Cyperus esculentus*

The quantitative phytochemical analysis of *Cyperus esculentus* was determined using standard methods described by [6,7,8 and 9].

2.12 Semen Collection and Analysis

The sperm cells were collected from the epididymal portion. The caudal portion of each epididymis was incised and a smear made on the preheated glass slides for evaluation.

2.12.1 Macroscopic examination

The semen consistency was evaluated macroscopically and recorded. The consistency scale [1-4], adopted by [10] was used.

2.12.2 Abnormal sperm proportion

The abnormal sperm proportion was determined by the method described by [11]. A drop of the semen was stained using E/N stain and the mixture smeared on a glass slide and viewed under a lower magnification of $\times 40$ to check for primary and secondary abnormal sperm cells, percentage of the differential abnormalities such as head abnormalities, tail abnormalities, mid-piece abnormalities etc.

$$\text{Relative Organ Weight} = \frac{\text{Weight of Organ (g)}}{\text{Live Weight (g)}} \times 100$$

12.13 Statistical Analysis

Statistical analysis was carried out using windows (SPSS version 15.0). Data were analyzed using one-way ANOVA followed by post hoc test-least significant difference (LSD), while charts were done using Microsoft excel. The data was expressed as mean \pm SEM and values of $p < 0.05$ were considered significant.

3. RESULTS

3.1 Phytochemical Composition of *Cyperus esculentus*

The quantitative phytochemical composition of *Cyperus esculentus* shows the presence of phytochemicals in varying quantities. There was a high concentration of flavonoids and alkaloids. There was moderate concentration of tannins and small quantities of cardiac glycosides, steroids, saponins, phenolic compounds and terpenes (Table 1).

3.2 Effect of Tiger Nut Meal on Food Intake (g)

Figs. 1 and 2 showed the results of the effects of tiger-nut meal on food intake. The rats in the

control group were fed with normal animal feed. The food intake of the negative control significantly decreased when compared with the normal control ($p < 0.05$).

The administration of both low and high doses of tiger nut meal to the induced and non-induced groups showed a significantly enhanced intake of food by the animals. The higher the percentage of tiger nut in the meal, the more enhanced the food intake. The groups administered with low doses however, showed increase in food intake when compared with controls ($p < 0.05$).

3.3 Effect of Tiger Nut Meal on Water Intake (ml)

Figs. 3 and 4 showed the results of the effect of tiger nut meal on water intake. The control groups and the other experimental groups were given normal water to drink. The water intake of the animals in the negative control significantly decreased when compared with the normal control following the induction of BPH ($p < 0.05$).

The results of water intake in post-treatment groups of both low and high doses of tiger nut meal showed that the introduction of tiger nut meal at high doses significantly decreased the intake of water by the animals. This finding is also seen in the apparently normal animals following the administration of tiger nut meal ($p < 0.05$).

3.4 Effect of Tiger Nut Meal on the Total Protein (g/dl)

Table 2 showed that after induction of BPH, there was a significant decrease in the level of total protein (5.69 ± 0.12) in the negative control group ($p < 0.05$).

Treatment of the BPH with the tiger nut meal after induction shows that, at both low and high doses of 10% and 20% respectively, the level of total protein increased significantly ($p < 0.05$).

Furthermore, the administration of tiger nut meal to the rats in normal condition at both low and high doses showed an increase the level of total protein ($p < 0.05$).

Table 1. Phytochemical analysis of tiger nut extract

Parameters	Qualitative	Quantitative
Alkaloids	+++	8.37 mg/100g
Cardiac glycosides	+	1.15 mg/100g
Steroids	+	1.02 mg/100g
Tanins	++	7.62 mg/100g
Flavonoids	+++	9.82 mg/100g
Saponins	+	1.62 mg/100g
Phenolic compounds	+	3.93 mg/100g
Terpenes	+	0.87 mg/100g

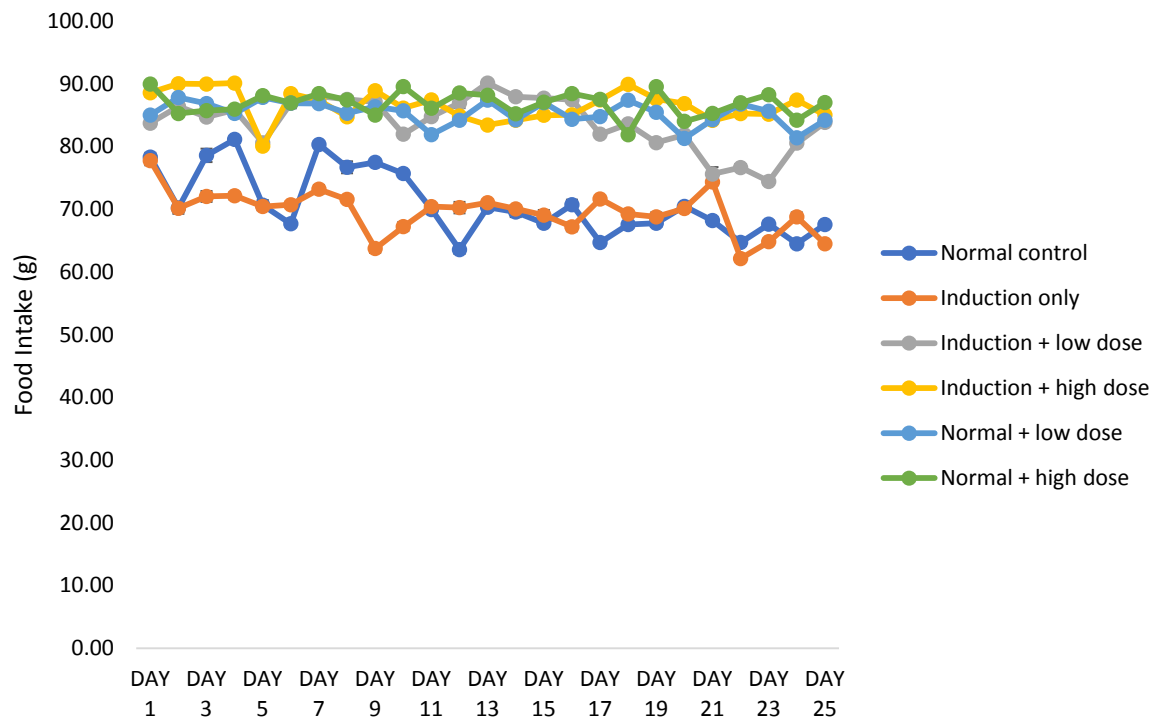


Fig. 1. The effect of tiger nut on Food intake
 Values are expressed as mean \pm SEM, $n=10$ ($p<0.05$)

3.5 Effect of Tiger Nut Meal on the Body Weight Changes (g)

Table 3 showed that after the 50 days of experimentation, there was a statistical increase in the body weight in the treatment groups ($p>0.05$).

The post-induction treatment with low and high doses showed there is a consistent increase in the body weight following the administration of tiger nut meal however, that of low dose tend to increase the weight more than that of high doses ($p>0.05$).

The administration of low and high doses of tiger nut meal to the apparent normal animals showed a consistent increase in the weight of the animals ($p>0.05$).

3.6 Effect on Semen Consistency (Sperm Thickness) [1-4]

Table 4 shows that the level of the semen consistency in the normal control group was 2.40 ± 0.22 . After induction of BPH, there was a significant decrease in the level of consistency of the semen to about 1.30 ± 0.21 in the negative control group. This value is statistically lower compared to the normal control ($p < 0.05$).

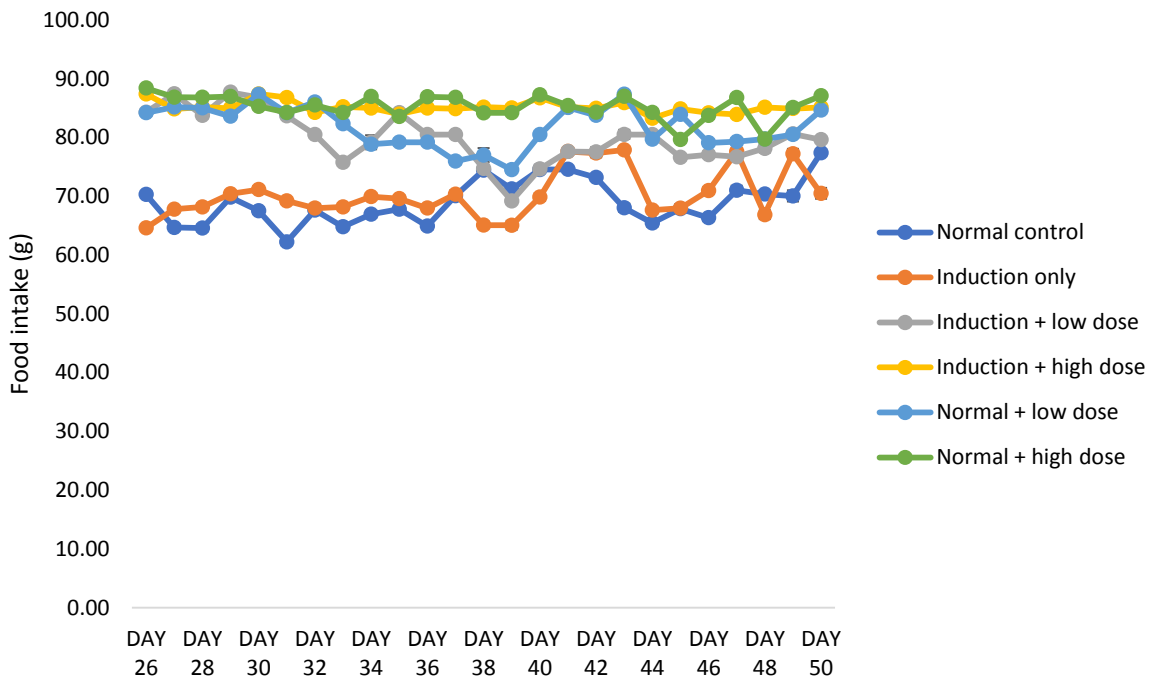


Fig. 2. The effect of tiger nut on Food intake extension
 Values are expressed as mean \pm SEM, n=10 (p<0.05)

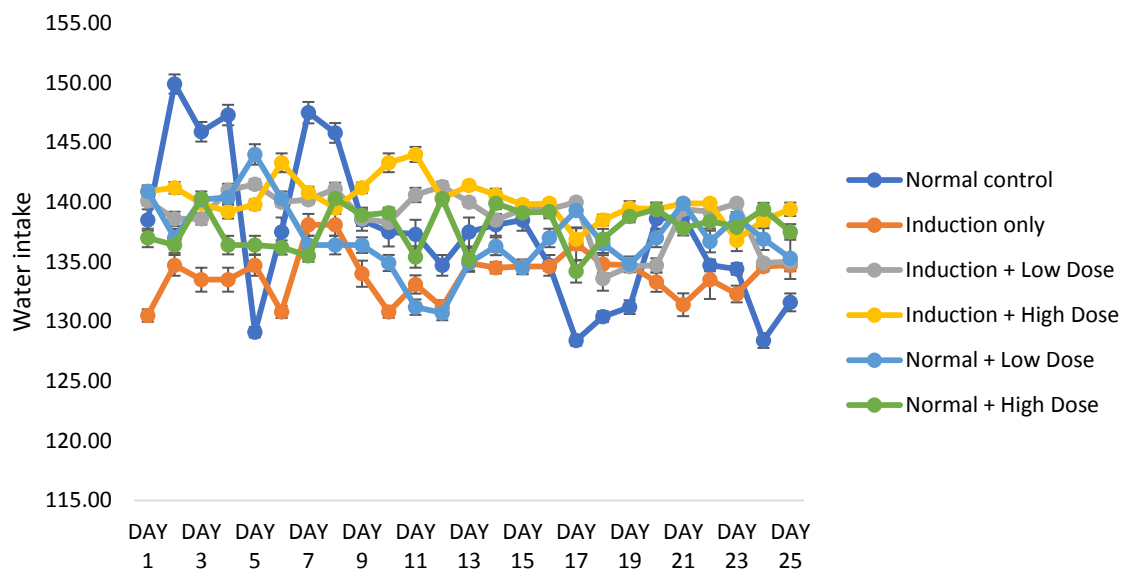


Fig. 3. The effect of tiger nut-meal on water intake
 Values are expressed as mean \pm SEM, n=10 (p<0.05)

Treatment of the BPH with the tiger nut meal after induction showed that, at both low and high doses, the level of semen consistency increased significantly (p < 0.05).

Finally, the administration of tiger-nut meal to the rats in normal condition at low and high doses, showed a further significant increase in the level of the semen consistency (p<0.05).

3.7 Effect of the Tiger Nut Meal on Total Abnormality of the Sperm Cells (%)

Fig. 5 shows that the total count of sperm cells with abnormality in the normal control group was 2.29 ± 0.08 . After BPH has been induced, there was a significant increase in the level of total

abnormality in sperm cells to about 6.02 ± 0.48 in the negative control group ($p < 0.05$).

However, administration of the tiger-nut meal BPH showed that, at both low and high doses of

the tiger nut meal, a significant decrease in the percentage of the sperm cells with total abnormality was recorded in the animals when compared with the negative control of 6.02 ± 0.48 ($p < 0.05$).

Table 2. Effect of tiger nut meal on Total protein

Parameters	Control	BPH only	BPH + Low dose (10%)	BPH + High dose (20%)	Normal + Low dose (10%)	Normal + High dose (20%)
TP (g/dl)	7.05 ± 0.09^c	5.69 ± 0.12^a	6.45 ± 0.11^b	6.58 ± 0.08^b	7.21 ± 0.08^c	7.38 ± 0.07^c

Values are expressed as mean \pm SEM, $n=10$, parameters in the column with the same alphabet are statistically the same ($p > 0.05$), parameters with different alphabets are statistically different ($p < 0.05$)

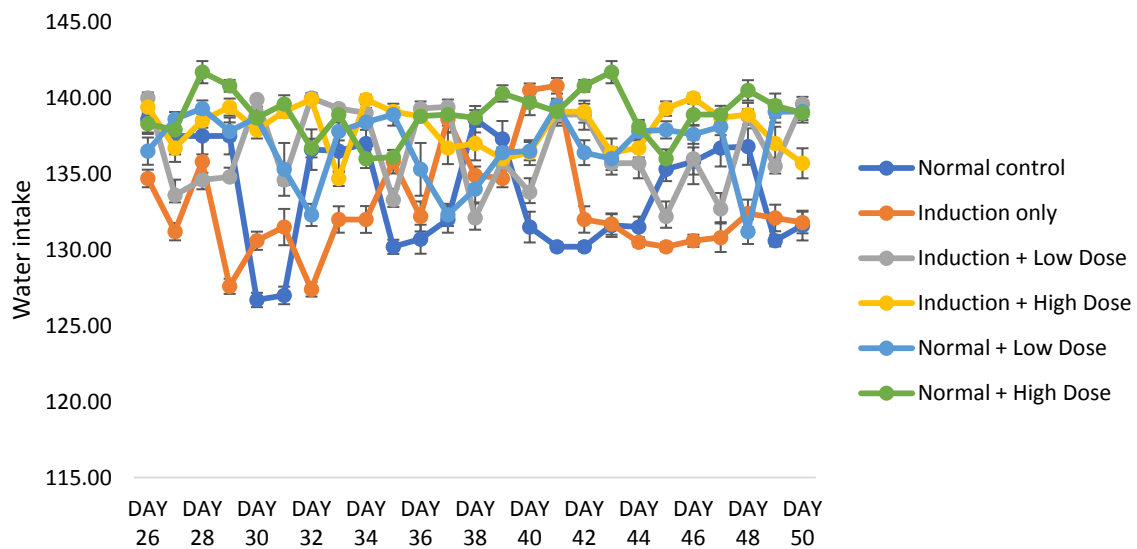


Fig. 4. The effect of tiger nut-meal on water intake (extension)

Values are expressed as mean \pm SEM, $n=10$ ($p < 0.05$)

Table 3. Effect of tiger nut meal on Body weight changes

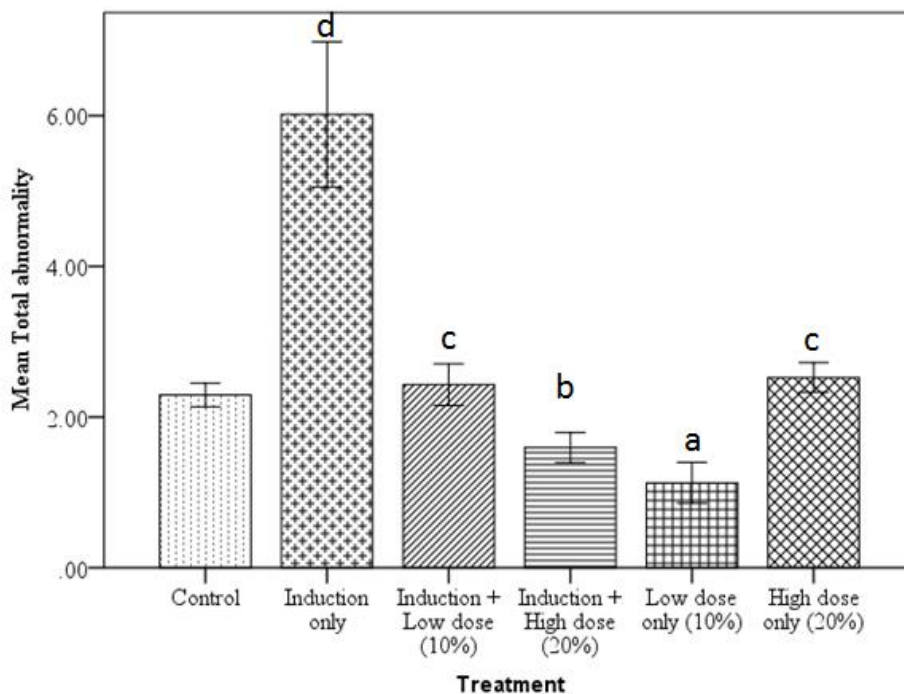
Groups	Treatments	Weight changes (g)		
		Before induction	After induction	After experiment
1	Normal control	135.30 ± 1.71^b	170.00 ± 1.60^d	211.91 ± 2.44^a
2	BPH only	150.59 ± 3.62^a	151.53 ± 4.02^a	179.37 ± 3.39^b
3	BPH + low dose	131.36 ± 2.25^b	133.23 ± 2.99^c	212.95 ± 3.58^a
4	BPH + high dose	133.09 ± 1.78^b	134.97 ± 2.26^{bc}	178.86 ± 3.09^b
5	Normal + low dose	139.45 ± 5.00^b	144.79 ± 6.47^{ab}	224.04 ± 11.36^a
6	Normal + high dose	130.81 ± 3.40^b	130.96 ± 2.96^c	190.65 ± 7.92^d

Values are expressed as mean \pm SEM, $n=10$, parameters in the column with the same alphabet are statistically the same ($p > 0.05$), parameters with different alphabets are statistically different ($p < 0.05$)

Table 4. Effect of tiger nut meal on semen consistency (thickness of sperm)

Groups	Treatment	Semen consistency
1	Normal control	2.40±0.22 ^c
2	BPH only	1.30±0.21 ^d
3	BPH + low dose	2.00±0.26 ^c
4	BPH + high dose	3.10±0.18 ^b
5	Normal + low dose	3.70±0.15 ^a
6	Normal + high dose	3.30±0.15 ^{ab}

Values are expressed as mean ± SEM, n=10, parameters in the column with the same alphabet are statistically the same ($p>0.05$), parameters with different alphabets are statistically different ($p<0.05$)

**Fig. 5. Effect of tiger nut meal on the Total abnormality of the sperm cell**

$d = p < 0.05$ vs control; $c = p < 0.05$ vs induction only; $b = p < 0.05$ vs induction only; $a = p < 0.05$ vs control
Values are expressed as mean ± SEM, n=10.

Furthermore, the administration of tiger nut meal to the rats in normal condition at low dose of 10% (1.13 ± 0.14) showed a significant decrease when compared with the normal control ($p < 0.05$) however, that of high dose (20%) 2.53 ± 0.10 showed a statistical decrease when compared with the negative control ($p < 0.05$) and has no significant decrease when compared with the normal control ($p > 0.05$).

4. DISCUSSION

The effect of tiger nut meal on total protein showed that there was a significant increase in the total protein level following the administration of tiger nut to animals that had induced BPH. Tiger nut also improved the total protein levels in

apparently normal animals that were not induced with BPH. The normal range for total protein levels in blood serum is 6 – 8 grams per decilitre (g/dl). The initial decrease recorded in the animals following the induction of BPH could be as a result of either malabsorption disorder e.g., celiac disease or kidney disease such as nephrotic syndrome or glomerulonephritis which could lower the protein levels. According to [12], this effect of tiger nut to ameliorate the lower levels of the total protein may be as a result of its rich content of essential and non-essential amino acids.

The effect of tiger nut meal on food intake, water intake and body weight changes were also studied. The results of the effect of tiger nut meal

on food intake showed that there was an increase in food intake in the groups administered with high doses more than the groups with lower doses. This finding suggests that tiger nut may be stimulating the release of some hormones (such as ghrelin) which increases the appetite of the animals. It has also been discovered that ghrelin reduces energy expenditure of the body. On water intake, the study showed that tiger nut does not stimulate/enhance the intake of water in the animals. On body weight changes, the results showed that the administration of tiger nut over a prolonged period of time, brought about a decrease in the body weight. Irrespective of the fact that tiger nut is rich in fatty acid, previous studies has shown that most of the fats in tiger nut are found in the nut's cell walls which do not easily breakdown during digestion. Most of the fats are passed out through the faeces. Furthermore, tiger nut has been found also to be rich in fibre and calories. These do not add much weight on the body.

The effect of *Cyperus esculentus* (tiger nut) on semen parameters namely; semen consistency (thickness) and total abnormality were also studied. This study showed that tiger nut ameliorated the high level of abnormality in the sperm cells. There was a significant increase in the level of semen consistency following the administration of Tiger-nut to animals that had induced BPH. Also, tiger nut enhanced the levels of the semen consistency (thickness) in apparently normal animals that were not induced with BPH. This finding may be associated with the increase in testosterone hormone level and it's consistent with the earlier study conducted by Izunwanne [13].

Tiger nut (*Cyperus esculentus*) was carefully studied and analysis of its phytochemical composition was carried out in order to ascertain the presence of phytochemicals that were qualitatively and quantitatively present. The result as seen in Table 1 showed a relatively high concentration of flavonoids, alkaloids and even tannins while bioactive compounds like saponin, phenolic compounds terpenoids and glycosides were present in small concentrations.

Flavonoid is a potent antioxidant and free radical scavenger and has been shown to protect cell membranes from damage [14]. Also, In vitro studies have also shown that flavonoids have anti-allergic, anti-inflammatory and anti-cancer

activities [15]. Therefore, the *Cyperus esculentus* might be ascribed with these potentials.

Tannins have astringent properties that affect palatability, reduce food intake and consequently body growth. It also hastens the healing of wounds and prevention of decay. Tannin compounds have antimicrobial activities and are responsible for preventing and treating urinary tract infections and other bacterial infections [16]. They are known to inhibit the activities of digestive enzymes and nutritional effects of tannins are mainly related to their interaction with protein. Tannin protein complexes are insoluble and protein digestibility is decreased [17].

Saponins are known to reduce certain nutrients like glucose and cholesterol at the gut through intra-luminal physicochemical interactions [18]. Also, when saponins are consumed they may aid in lessening the metabolic burden that would have been placed on the liver. They are known to inhibit the structure dependent biological activities [19]. Saponins have been reported to be useful in reducing inflammation of upper respiratory passage and also chiefly as foaming and emulsifying agents and detergents. These compounds serve as natural antibiotics, helping the body to fight infections and microbial invasion [20].

Alkaloids, saponins and tannins are known to have anti-inflammatory activities as well as other physiological activities [21,22]. Alkaloids are known for their toxicity but not all alkaloids are toxic. Alkaloids inhibit certain mammalian enzymatic activities such as those of phosphodiesterase, prolonging the action of cAMP.

While some other forms have been reported to be carcinogenic while some have been used either as an analgesic, antispasmodic or bactericidal agents [23]. The result obtained from the phytochemical test indicates that the *Cyperus esculentus* possesses some biologically active compounds which could serve as potential source of vegetable drugs in herbal medicine.

5. CONCLUSION

From the results analysed, it can be said that tiger nut meal decreases the rate of water intake, body weight of the rats and total semen abnormality while at the same time, enhancing food intake, Total Protein and semen consistency.

CONSENT

It is not applicable.

ETHICAL APPROVAL

All experimental protocols were subjected to the scrutiny and approval of Institutional Animal Ethics Committee.

COMPETING INTERESTS

Authors have declared that no competing interests exist.

REFERENCES

1. Smith BK, Andrews PK, West DB. Macronutrient diet selection in thirteen mouse strains. *Am J Physiol Regul Integr Comp Physiol.* 2000;278:R797–R805.
2. Kraly FS. Physiology of drinking elicited by eating. *Psychol Rev.* 1984;91:478–490.
3. Lorke DA. New approach to practical acute toxicity testing. *Archives of Toxicology.* 1983;54:275-287.
4. Izunwanne DI, Egwurugwu JN, Emegano CL. Effect of Tiger Nut Meal on PSA, Relative Organ Weight Sperm Cell and Histological Changes in Androgen-induced Benign Prostate Hyperplasia in Adult Male Wistar Rats. *European Journal of Medicinal Plants.* 2020a;31(15): 1-10.
5. Trease GE, Evans WC. Phenols and Phenolic Glycosides, In: Trease and Evans Pharmacognosy and Biliere Tindall, London. 1983;832.
6. Harborne JB. *Phytochemical Methods: A Guide to Modern Technology of Plant Analysis.* 2nd Edn. Chapman and Hall, New York. 1983;113.
7. Obadoni BO, Ochuko PO. Phytochemical studies and comparative efficacy of the crude extract of some homeostatic plants in Edo and Delta States of Nigeria. *Global Journal of Pure and Applied Sciences.* 2001;8:203-208.
8. Boham BA, Kocipai AC. Flavonoids and condensed tannins from the leaves of Hawaiian *Vaccinum vaticulatum*. *Pacific Sciences.* 1994;48:458-463.
9. Nabavi SM, Ebrahimzadeh MA, Nabavi SF, Hamidinia A, Bekhradnia AR. Determination of antioxidant property, phenol and flavonoid contents of *parotia persica meyer*. *Pharmacology Online.* 2008; 2:560-567.
10. Chibundu UC. Response of pre-pubertal bucks to administration of estradiol B. Project Report, Federal University of Technology, Owerri. 2013;30.
11. El-Sherbiny AM. Seasonal variation in seminal characteristics of rabbits. M.Sc. Thesis, Fac. of Agric., Ain-Shams University; 1987.
12. Ogunlade I, Adeyemi B, Aluko O. Chemical compositions, Antioxidant capacity of tiger nut and potential health benefits. *European Scientific Journal.* 2015;6(3):322-329.
13. Izunwanne DI, Egwurugwu JN, Emegano CL. Effect of Tiger Nut Meal on Some Sex Hormones and Sperm Cells in Androgen-induced Benign Prostate Hyperplasia in Adult Male Wistar Rats. *Journal of Advances in Medicine and Medical Research.* 2020b;32(14):74-82.
14. Noda Y, Kneyuki T, Igarashi K, Mori A, Packer L. Antioxidant activity of nasunin, an anthocyanin in egg plant peels. *Toxicology.* 2000;148:119-123.
15. Sousa RR, Queiroz KC, Souza AC, Gurgueira SA, Augusto AC, Miranda MA, Peppelenbosch MP, Ferreira CV, Aoyama H. Phosphoprotein levels, MAPK activities and NFkappaB expression are affected by fisetin, *Journal of Enzyme Inhibition and Medical Chemistry.* 2007;22(4):439–444.
16. Tapiero H, Ba GN, Tew KD. Estrogen and environmental estrogens. *Biomedical Pharmacotherapy.* 2002;56:1-9.
17. Carnavole E, Lugaro E, Marconi E. Protein quality and antinutritional factors in wild and cultivated species of *vigna spp.* *Plant Food for Human Nutrition.* 1991;41(1):11-20.
18. Price KR, Johnson LI, Feriwick H. The chemical and biological significance of saponins in foods and feeding stuffs. *Critical Reviews in Food Science and Nutrition.* 1987;26:127-135.
19. Savage GP. Saponins. In: *Encyclopaedia of Food Science, Food Technology and Nutrition*, Macrae, R., Robinson, R.K. and Sadler, M.J. (Eds). Academic Press London. 1993;3998-4001.
20. Okwu DE. Phytochemicals and vitamin content of indigenous spices of South Eastern Nigeria. *Journal of Sustainable*

- Agriculture Environment. 2004;6(1):30–37.
21. Sofowora EA. Medicinal Plants and Traditional Medicine in Africa. Spectrum Books Limited, Ibadan-Owerri - Kaduna-Lagos. 1993;159-176; 179-189; 195-238.
22. Evans NS. Trease and Evans. Pharmacognosy. 15th Edn, Elsevier, India. 2005;1-24.
23. Frantisek SS. The Natural Guide to Medicinal Herbs and Plants. Tiger Barks Cast, Twinkemhan, United Kingdom. 1991; 1-5.

© 2021 Izunwanne et al.; This is an Open Access article distributed under the terms of the Creative Commons Attribution License (<http://creativecommons.org/licenses/by/4.0>), which permits unrestricted use, distribution, and reproduction in any medium, provided the original work is properly cited.

Peer-review history:

The peer review history for this paper can be accessed here:
<https://www.sdiarticle5.com/review-history/82240>